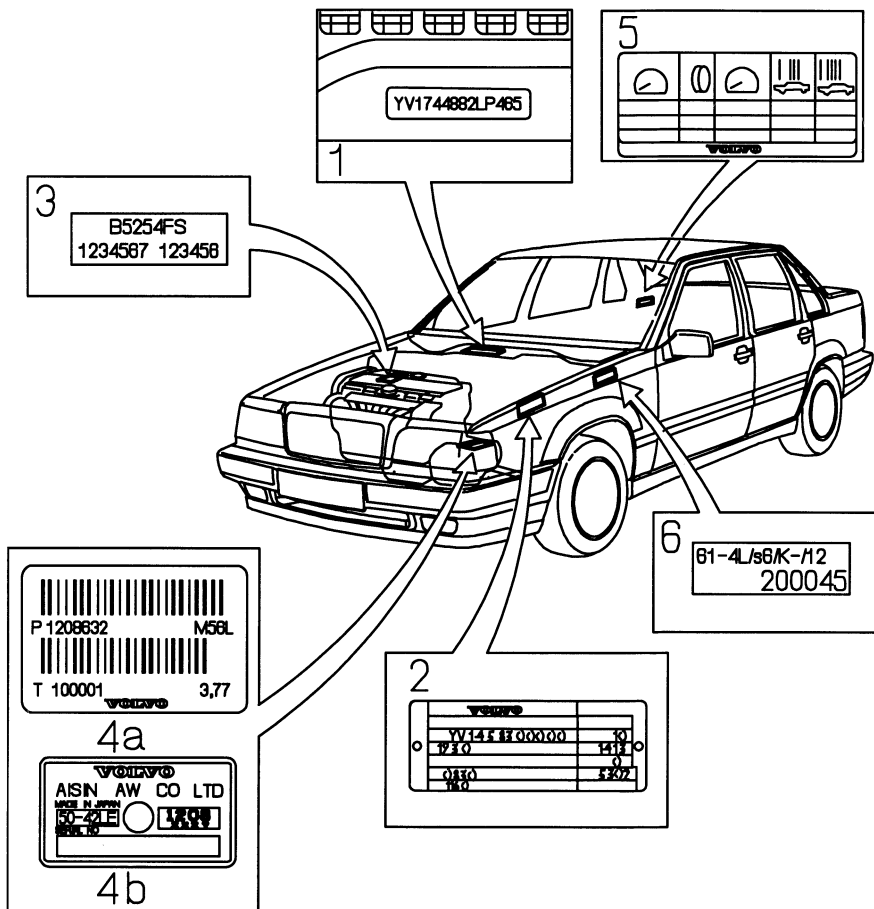


# Section 0 General

## Plates



## 1. Type and model year designations and chassis no.

Embossed on upper side of firewall in engine compartment.

## 2. Product plate

Plate on left wheel housing in front of wheel strut.

For explanation, see page 6

## 3. Engine type designation, manufacturing code and part number

Decal on timing case cover. Also embossed on cylinder block right side above the coolant pump housing between the timing cover and the manifold.

Note: The letter "F" in engine type designation is not embossed on cylinder block and is not to be found on the decal either.

Also deleted in this edition.

## 4. Transmission type designation, part and manufacturing number.

A. Manual transmission: Decal on transmission upper side.

B. Automatic: Plate on transmission upper side

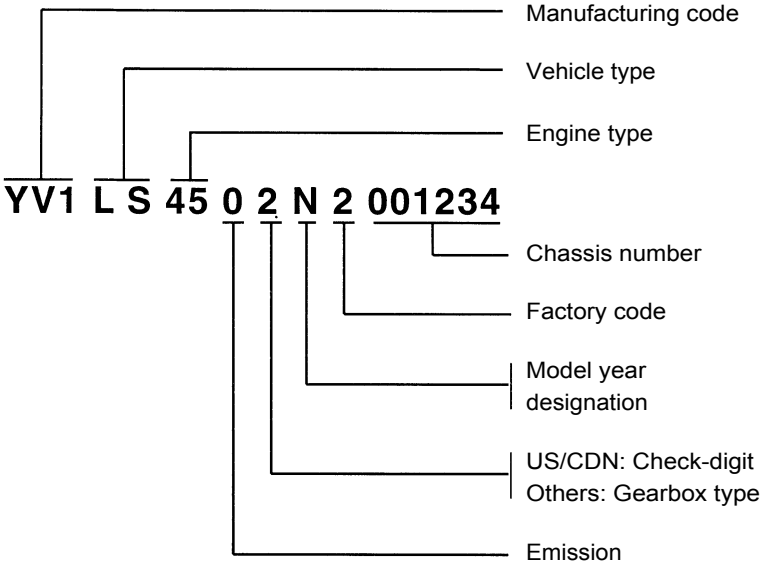
## 5. Tyre pressure

Decal on inside of fuel filler flap.

## 6. Body number plate

Plate on inside left wheel housing behind spring strut.

Type and model year designation and chassis no.



Engine type	Factory code	Model year designation	Transmission type
45 = B 5204 S	2 = Belgium (VEC)	M = 1991*	2 = M 56 L/H
51 = B 5252 S	4 = Thailand	N = 1992*	6 = AW 50-42 LE
55 = B 5254 S	5 = Malaysia (SMA)	P = 1993*	
57 = B 5234 T	7 = Indonesia	R = 1994*	

\* France = 0

Vehicle type:

LS = 4-door sedan

LW = 5-door wagon

Emission:

0 = with three-way catalytic converter (TWC), Heated oxygen sensor (HO2S), vacuum-reg. evap. system. Without EGR-valve.

1 = with three-way catalytic converter (TWC), Heated oxygen sensor (HO2S), vacuum-reg. evap. system. With EGR-valve.

2 = with three-way catalytic converter (TWC), Heated oxygen sensor (HO2S), vacuum-reg. evap. system, Airpump. With EGR-valve.

Mod. year	Mod. let.	Chassis no.		Engine	Transmission	Final drive
		854	855			
1992	N	1 – 30699*		B 5204 S, B 5254 S	AW 50-42, M 56 L	2.74:1, 4.00:1, 4.45:1
1993	P	30700** – 124999	268 – 24999	B 5204 S, B 5252 S, B 5254 S	AW 50-42, M 56 L	2.54:1, 2.74:1, 3.16:1, 3.77:1, 4.00:1, 4.45:1
1994	R	125000	25000 –	B 5204 S, B 5252 S, B 5254 S, B 5234 T	AW 50-42, M 56 L, M 56 H	2.54:1, 2.74:1, 3.16:1, 4.00:1, 4.45:1

**NOTE!** For the following market codes applies:

Remark	Code 10 (Sweden)	Code 18 (Germany)	Code 21 (Holland)
*	27725	28813	28830
**	27726	28814	28831

## Product plate

<b>VOLVO</b>		<b>MADE IN BELGIUM</b>	
<b>A</b>		<b>D D</b>	
<b>B</b>		<b>E E E E</b>	
<b>C<sub>1</sub></b>	<b>kg</b>	<b>F F F - F F</b>	
<b>C<sub>2</sub></b>	<b>kg</b>	<b>G G G G G</b>	
<b>C<sub>3</sub></b>	<b>kg</b>	<b>H H H H H H H</b>	
<b>C<sub>4</sub></b>	<b>kg</b>		

<p><b>A. Type approval</b></p> <p><b>B. Identification number</b> (Type designation)</p> <p><b>C<sub>1</sub>. Max. total weight</b></p> <p><b>C<sub>2</sub>. Max. train weight (car + trailer)</b></p> <p><b>C<sub>3</sub>. Max. front axle load</b></p> <p><b>C<sub>4</sub>. Max. rear axle load</b></p> <p><b>D. Marketing code</b></p> <p><b>E. Interior trim code</b></p> <p>Pos 1: Model 3 = 850</p> <p>Pos 2: Upholstery 2 = Tricotplush 3 = Tricot 5 = Plush 7 = Plush/Leather 9 = Leather</p> <p>Pos 3: Colour 3 = Blue 4 = Red 5 = Beige 7 = Grey</p> <p>Pos 4: Serial number</p>	<p><b>F. Exterior colour, code/supplier/ paint type</b></p> <p>Pos 1 - 3: Colour</p> <p>019 = Black non-metallic 130 = Silver metallic 189 = White non-metallic 214 = Dark grey metallic 406 = Mid-blue metallic 411 = Beige metallic 412 = Aquamarine metallic 414 = Burgundy metallic 415 = Light-blue metallic 416 = Green metallic 417 = Dark-blue metallic 418 = Red metallic 601 = Red non-metallic 606 = Green non-metallic</p> <p>Pos 4: Supplier 1 = BASF 2 = Herberts 4 = IDAC</p> <p>Pos 5: Paint type 1 = Solvent-based</p> <p><b>G. S-bulletins (Options)</b></p> <p><b>H. Chassikod (1994)</b></p>
--	--

The chassis code consists of seven digits as follows

How to interpret the chassis code

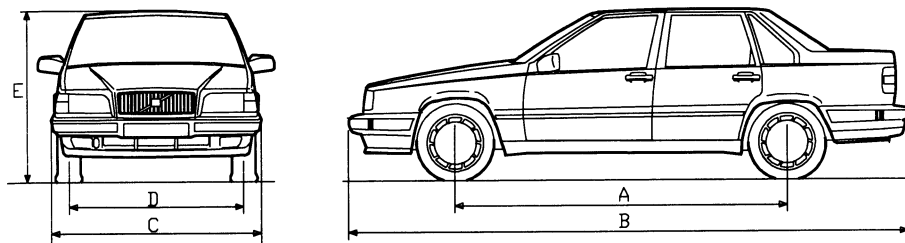
**A 8 3 7 9 2 4**

- Bump stop: 35 16 327
- Rear anti-roll bar: 35 46 386
- Rear springs: 35 46 893
- Rear shock absorbers: 68 00 327
- Front anti-roll bar: 35 46 859
- Front springs: 35 46 640
- Shock absorbers: 271 831
- Brake discs: 271 590
- Brake calipers, LH: 35 16 840
- RH: 35 16 841

Po 1, 2	Springs, front	Shock absorbers, front	Brake disc	Brake calipers	Pos 3	Anti-roll bar, front
11	35 46 640	271 831	271 590	35 16 840-41	W	35 46 859
15	35 46 640	271 833	271 590	35 16 840-41	X	35 46 860
21	35 46 641	271 831	271 590	35 16 840-41	Y	35 46 861
25	35 46 641	271 833	271 590	35 16 840-41		
31	35 46 642	271 831	271 590	35 16 840-41		
35	35 46 642	271 833	271 590	35 16 840-41		
45	35 46 643	271 833	271 590	35 16 840-41		
1L	35 46 640	271 833	271 590	35 16 840-41		
2L	35 46 641	271 833	271 590	35 16 840-41		
7L	35 46 833	271 833	271 590	35 16 840-41		

PlatesSection 0 General

<b>Pos 4</b>	<b>Shock absorbers, rear</b>	<b>Pos 5</b>	<b>Springs, rear</b>	<b>Pos 6</b>	<b>Anti-roll bar, rear</b>	<b>Pos 7</b>	<b>Bump stop</b>	
A	68 00 327	A	35 46 893	M	35 46 386	S	91 40 067	
C	13 87 929	C	91 40 099	N	35 46 389		35 16 327	
E	91 40 238	E	35 46 335	P	35 46 388	L	91 40 129	
F	91 40 391	F	91 40 100				35 46 705	
		G	35 46 285				H	91 40 067
		H	91 40 035				35 46 705	
		J	91 40 132					
		K	91 40 133					



Dimensions in mm (inch)		854	855	854	855
A	Wheelbase .....	2665	2665	104.9	104.9
B	Length .....	4660	4710	183.5	185.4
C	Width .....	1760	1760	69.3	69.3
D	Track, front .....	1520	1520	59.8	59.8
	rear.....	1470	1470	57.9	57.9
E	Height, approx. (depends on type of tyre) ...	1415	1445	55.7	56.9
<b>Weight in kg (lb)</b>					
Approx. weight of empty car with full fuel tank ..		1348	1410	2972	3109
		-1472	-1518	-3246	-3347
Max. roof load .....		100	100	220	220
Max. trailer weight, trailer without brakes ....		700	700	1544	1544
trailer with brakes .....		1600	1600	3528	3528
<b>Capacities in litres (US gal)</b>					
Fuel tank, volume (remaining vol.) .....		73 (2)	73 (2)	19.3(0.5)	19.3(0.5)